



THE TURNING TIMES

Volume 12 Issue 9

An East Texas Woodturners Publication

September 2004

President	Tom Crosby	(903) 567-4701	ctomsturnings@aol.com
Vice President	Mark Anthony	(903) 963-7128	emark@att.net
Treasurer	Archie Stivner	(903) 876-4085	ashighsaw@aol.net
Librarian	John Leonard	(903) 592-6009	jdl38@flash.net
Project Coordinator	Ken Terrell	(903) 839-4735	krtpt@tyler.net
Secretary	Joseph Armstrong	(903) 567-3026	jarmstr@airmail.net

Visit us at www.easttexaswoodturners.org

THE TURNING TIMES is a published monthly as an information source for members of the East Texas Woodturners (ETW). ETW is a chapter of The American Association of Woodturners (AAW) and is committed to serving woodturners in the East Texas area surrounding Tyler, Texas. The ETW Chapter joins with the AAW in its dedication to providing education, information and organization to those interested in woodturning.

Meeting at TJC West Campus

September 11, 2004 9:00

Calendar of Events

September 11, 2004

Regular Meeting

September 23, 2004

Steering Committee
3:00 p.m. TJC West

September 25, 2004

Freedom Pen
Project
The Country
Woodpile

October 1, 2, 3, 2004

S.W.A.T.
Temple, TX

October 16, 2004

Regular Meeting

October 28, 2004

Steering Meeting
3:00 p.m. TJC West

November 11 – 13, 2004

Wooden
Wonderland

November 18, 2004

Steering Meeting
3:00 p.m. TJC West

November 20, 2004

Regular Meeting

December 11, 2004

Christmas Party

December 16, 2004

Steering Meeting
3:00 p.m. TJC West

The Prez Says

Well let's hear it for Ed. Is this guy multitalented or what? He makes everything look so easy, whether it's electronics, cinematography, woodturning, mentoring, or whatever you need help with, it's all the same to him. He takes the methods of the big names and refines them so that the rest of us can understand what is going on. Great job Ed. I expect to see a lot of finial boxes at the future meetings.

We have a couple of changes in our schedule for the coming months. The meetings for Oct and Nov will be on the THIRD Saturday instead of the second due to some scheduling conflicts. So the Oct meeting will be on the 16th and the Nov meeting will be on the 20th.

We still need people to run the club next year. Tom Criswell is heading up a nominating committee so let him know what office you would like to have. This is your club so you are the one to help keep it growing and striving to be the Best In Texas

BASIC TURNING SEMINAR !! We will have a basic turning seminar on Oct 30, the last Sat in Oct. This will be held at the building next to where we have our regular meeting. That means that we will need some people to bring mini-lathes and help give instructions We will discuss the times and if we want lunch at the next meeting. This is always one of the highlights of the year so be sure and plan to come; especially those of you new to turning, everyone that attends, including the instructors, always learn something and have a good time.

Many thanks to Cary Grant for the outstanding job he did on coordinating our Bank Of America show.

They seem to get better every year. Plan on putting something in the show next year

The Show and Tell is growing! This is an important part of our meetings, where we can share our successes and failures and get praise, encouragement and help. Everything you do is worth bringing. Even if we don't always have time to talk about everything we can still look at the break and find someone to give us hints. So keep those turnings coming!

The raffle for this month will include, a bag of Turquoise, set of three diamond hones, Jacobs chuck for a #2 M tailstock, dial calipers, 10" carbide tip saw blade, cabinet scraper, and 8" curved forceps. We will start a 3-month raffle for a One-Way live center set. Christmas is coming! Don't forget to buy that winning ticket for the Stronghold chuck with the extra jaws.

I hope to see each of you at the Sep meeting, even though I will be doing the demo. The title is Putting a Spiral insert in a vase, or a study in patience and determination. I am using you for my guinea pigs, this will be the demo I do at the SWAT this year. I will be asking for comments both good and especially bad.

In the meantime make something round out of wood.

Tom

Table of Contents

The Prez Says	1
August Meeting.....	2
Editor's Corner	2
Member Classifieds.....	3
S.W.A.T. News	3
Tip of the Month	3
Mentor List	4

August Meeting



Charles B...
Mesquite



Doug McGarvey
Plum



Cary Gear
Bradford Pear



Jose Salas
Mesquite & Pear



Marion McDaniel
Pecan



Marion McDaniel
Pecan

WOODCRAFT

Helping You Make Wood Work

Jet	Powermatic	Delta
Sorby	Nova	Crown
Tormek	One-Way	Vega

Store Hours

Monday – Friday	9:00 a.m. to 7:00 p.m.
Thursday	9:00 a.m. to 9:00 p.m.
Saturday	9:00 a.m. to 6:00 p.m.
Sunday	11:00 a.m. to 5:00 p.m.

14300 Marsh Lane – Addison, TX 75001
(972) 241-0701

Anchor Seal \$7 per Gallon

**Please bring an exchange container
with screw type lid**

**Anchor Seal retails from \$15.95 per
gallon**

Corrections

August Tip of the Month

Provided by member Tom Lewis

August Classifieds

Walter Tate's Nova 3000 lathe
has a 1 ½ HP motor.

September Demo

C. Tom Crosby was born and raised in Vicksburg, MS. Tom retired from the U. S. Army Corps of Engineers, in 1995 after 40 years of service. He and his wife Marjorie relocated to Van Zandt County near the small town of Canton, Texas.

Tom has been working with wood since he was a youngster making boxes, furniture, cabinets, and has built two houses. He got his first lathe in 1999 and fell in love with woodturning. He makes segmented bowls, hollow vessels, pierced vessels, vases, boxes, urns, platters, cups, inlaid bowls and various other pieces. Two of his pieces were featured in the Members' Gallery of the Winter 2003 edition of the American Woodturner. His pieces have won several awards, including the top award in the 2004 Rockler's National Turning Contest.

Along with being the 2003 -2004 President of the East Texas Woodturners Club, in Tyler TX, Tom serves as a demonstrator and mentor and has demonstrated at several other clubs. He is also a member of the Dallas Area Woodturners and the American Association of Woodturners.

Tom says that woodturning gives him a chance to explore his artistic side and that when he picks up a piece of wood he can't wait to see what is hidden within. He is an avid conservationist and feels that this is a way of recycling by using wood from trees that have been cut or must be cut because of disease or some other reason.

Editor's Note

I am experimenting with the design and layout of the newsletter. This issue is utilizing a larger print and now includes a Calendar of Events.

My apologies to Tom and Walter for my omissions last month.

I will be missing the next few meetings so please contact me with your submittals, pictures, comments, etc. jarmstr@airmail.net or 903.567.3026

Take care, Joseph

Member Classifieds

Nova 3000 Lathe with stand

This lathe is similar to the club lathe except that it has a 1 ½ H.P. 220V DC Motor. It is 2 ½ years old. Asking \$1,000.

WoodTek Dust Collector

Model 802-124, 1 H.P. \$150.00
For these items:
Call Walter Tate 903.534.8808

S.W.A.T.

The 13th annual 2004 SWAT Symposium will be held on October 1, 2, & 3, 2004 at the [Mayborn Center in Temple TX](#)

Tip of the Month

Just before Christmas I was due to do a Craft Fair at a Local Village Hall and as I had arrived early I decided to take a stroll around the adjacent Playing Fields for some exercise, on the far side of the area I came across a very large Tree, later I identified this as a Horse Chestnut, that had been felled and sliced.

It was obvious that it had originally stood in the Garden of a House that was adjacent to the Playing Fields, on closer inspection the Slices of Timber were full of Burr and a good deal of Quilting and the thought of being able to have the odd piece was exciting.

A few enquiries and a couple of hours into the Craft Fair I was approached by the owner of the House, who had been told of my interest in his pile of wood, and we discussed the situation.

Basically it transpired he had to remove the Tree from the Playing Fields yet the slices were far too large to carry, and I wanted some of the Wood for Turning, so we struck a deal I would cut it into manageable pieces in return I could have what ever I wanted.

So over the next 3 weekends I harvested all of the Burrs and other Interesting pieces in all I made 10 Trips backwards and forwards to collect my booty.

Although I had owned a Chainsaw for some time I had never invested in any real Safety Wear and decided that I should do so before my Luck ran out, so I purchased Helmet/Visor/Ear Defenders, Protective Leggings, Gloves and Safety Boots and I must admit I for the first time felt relaxed and in control of what I was doing, knowing I would be protected as best as I could against any Incident.

This mass of Wood now required re-sawing into Blanks or Pieces of a suitable size for my Bandsaw before Waxing and storing away for Drying.

I had a number of issues that I felt I needed to address, considering the amount of Wood I would have to cut, something like 200 pieces, firstly we are talking December/January in the UK which was either Cold and Frosty or Raining, secondly I can either use the Lawn or the Concrete Path as my base for Cutting On, in the past this has often resulted in Damage to the Lawn at best or the Chainsaw at worst.

An alternative was to use the Workshop, Warm and Dry, but this has limited space and a Concrete Floor so I would require some means of Supporting the Wood with reasonable room around for Sawing and Safety.

My solution was to make the Sawing Platform and Log Cradle as illustrated below (**Editor's Note: on next page**)

The basic concept is a support that can be used to carry Slaps/Slices of Wood when one way up and Logs/Boughs when reversed.

Firstly cut 6 pieces of MDF, or any suitable material, to approximately 380mm [15"] x 300mm [12"] and then cut a "V" into one edge to a depth of approximately 100mm [4"] then you will need to drill two suitable holes on the center of each piece say about 50mm [2"] in from the edge.

I then used two lengths of M12 [½"] Screwed Rod to form the "Comb" like arrangement, by sandwiching each of the pieces of MDF between a Nut and Washer as shown, allowing a 75mm [3"] gap between the first and final three boards with a 150mm [6"] gap in the middle.

After using the Platform for some time I have noticed that some of the Nuts are coming loose, obviously due to the vibration generated when sawing, I have therefore re-tightened all the Nuts and then Spot Welded them in place, alternatively you could use some form of Adhesive, such as Thread Lock or Epoxy or use Lock Nuts to stop the Nuts from coming loose.

To protect the Chainsaw Blade from fouling the Steel Screwed Rod I simply slipped [cut to length required and then slit along the length] some 1½" Ø Heavy Duty Plastic Pipe over the Rods and Nuts.

This will give sufficient protection and they can be easily replaced if and when they get too damaged.

The arrangement also allows for the piece being cut to be Strapped down and therefore safeguarding against any movement and loss of control.

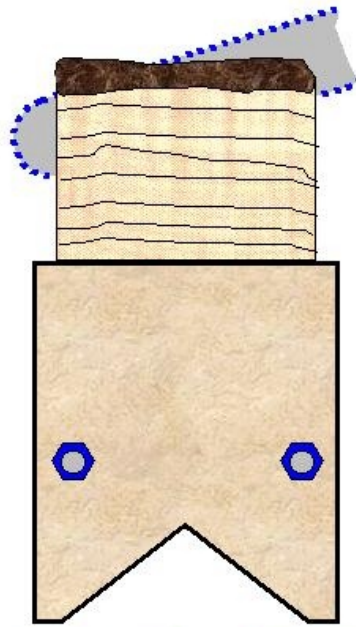
Mine is a Wrap Around Version and I simply place it around the Piece of Wood to be Cut and the Tie Bars of the Platform and use the Ratchet Handle to tighten it.

These Straps are made from Polyester Webbing and therefore would not do any damage to the Chainsaw Blade should it come in contact with the Webbing.

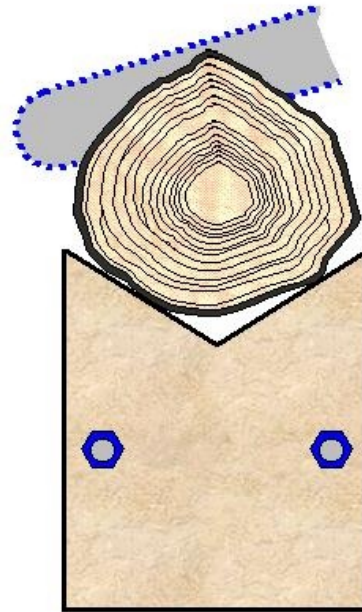
The Ratchet/Buckle however is of Steel and is best located low down and away from where the Saw Blade made reach.

By extending the Screwed Rod beyond each end you could if necessary attach some "A" Frame type Legs to raise the cutting height but I found that the assembly sitting on the Workshop Floor or on the Hard Stand outside the Workshop was ideal for my requirements.

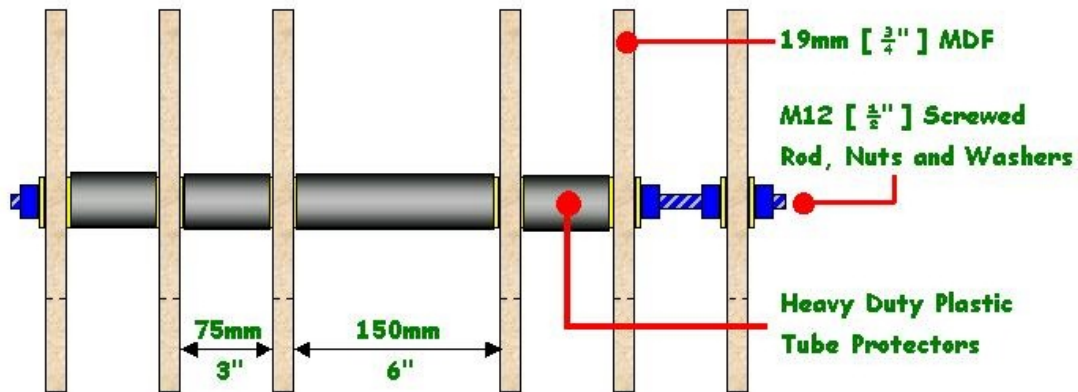
I used this to cut each and every piece of my Wood Pile and have ended up with well over 1,000 Bowl Blanks, Burrs for Natural Edge Bowls, assorted Billets and Blocks, and apart from the odd mis-calculated cut and slip onto the spacer bars, fortunately protected by the Plastic Pipe, the Platform is ready for my next Tree.



Cutting Slabs of Wood



Cutting Logs



Design of the Cutting Platform for use with the Chainsaw

This month's Tip came from: <http://www.laymar-crafts.co.uk/tip33.htm> ...jga

Mentor List

Charles Brooks	839-7042	Whitehouse	cbrooks@cox-internet.com
Tom Criswell	509-1042	Tyler	tmcriswell@yahoo.com
Tom Crosby	567-4701	Canton	ctomsturnings@aol.com
Norm Dixon	753-6980	Longview	normandixon@cablelynx.com
Steve Green	489-1507	Athens	s5670@aol.com
Ed Heuslein	834-3838	Kilgore/Overton	heuslein@earthlink.net
Gene Kircus	825-2111	Emerald Bay	gpkircus@earthlink.net
Peggy Kircus	825-2111	Emerald Bay	gpkircus@earthlink.net
John Leonard	592-6009	Tyler/New Harmony/Lindale	jdl38@flash.net
Lynn Pratt	581-0769	Noonday/Flint	lwoodpratt@aol.com
Ken Terrell	839-4735	Whitehouse	krtpt@tyler.net
Mike Taylor	723-8125	Palestine	taylorrm@goquest.com