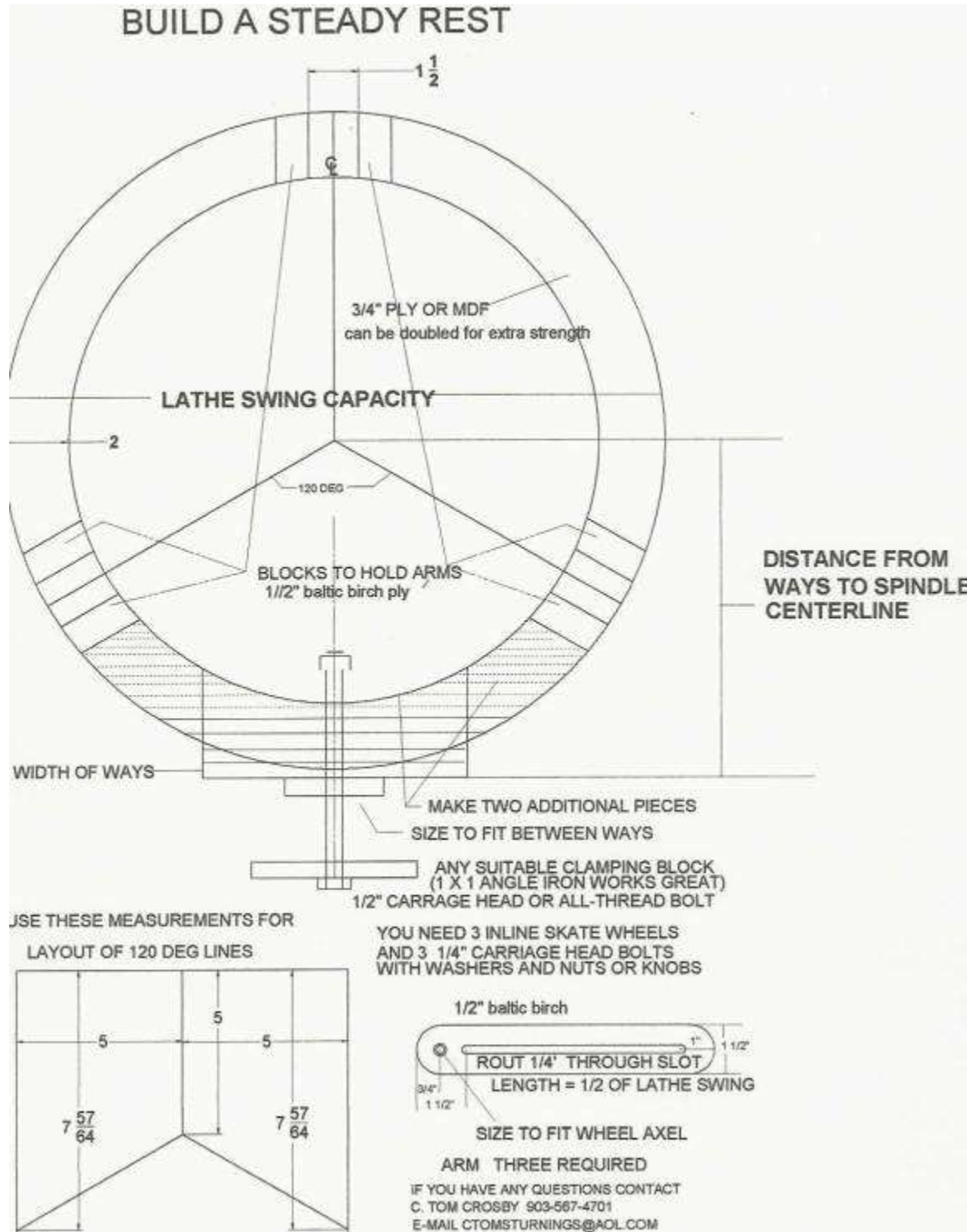
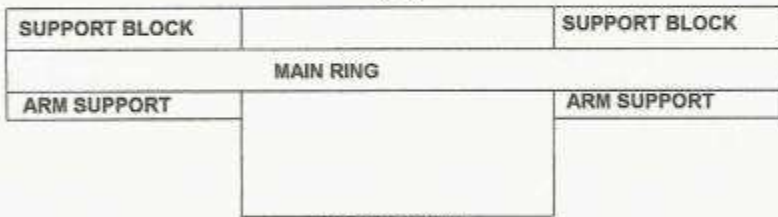
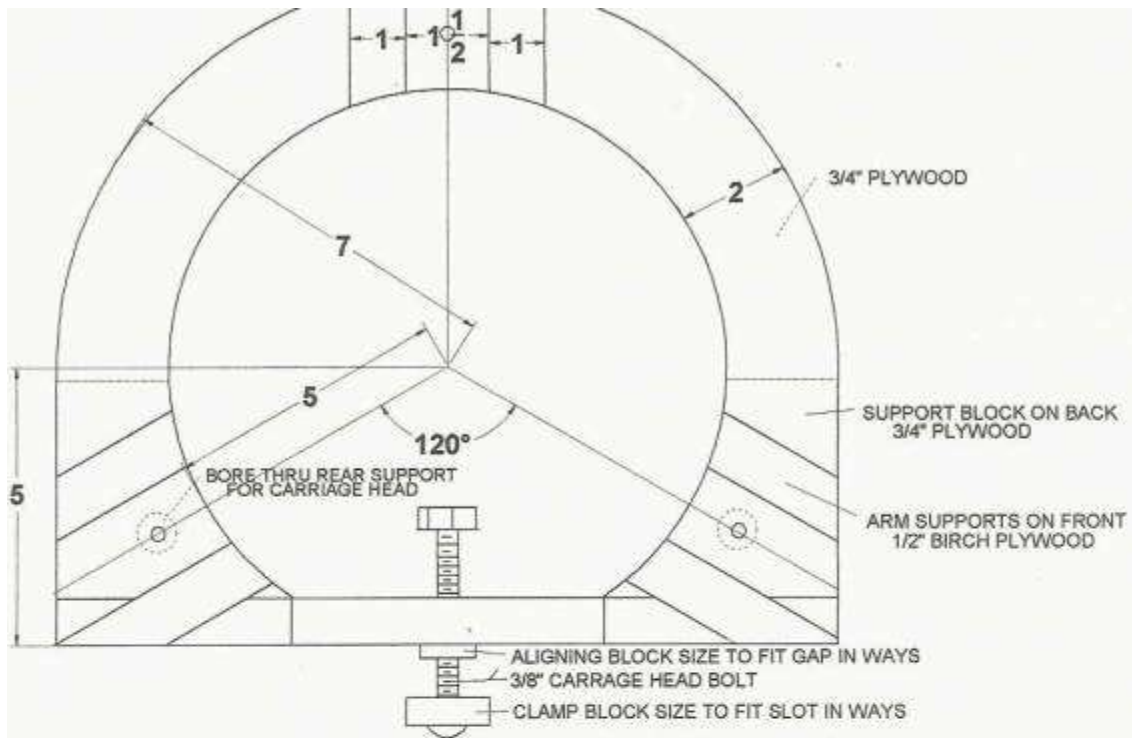
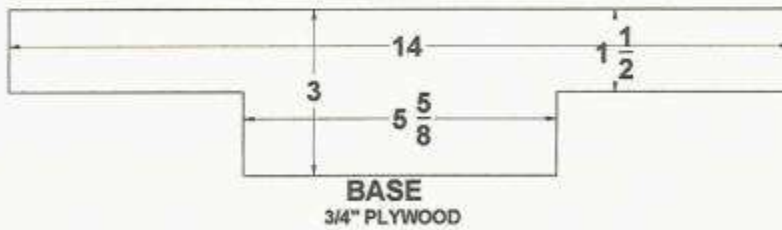


Plans for building a Steady Rest for a 10" Mini Lathe by Tom Crosby





TOP VIEW



YOU NEED 3 INLINE SKATE WHEELS WITH AXLES
 3 1/4 X 2" CARRIAGE HEAD BOLTS
 3 WASHERS AND NUTS OR KNOBS

STEADY REST FOR 10" MINI LATHE