



# THE TURNING TIMES

President	Bill Preston	903-657-8079	<a href="mailto:cwpreston@aol.com">cwpreston@aol.com</a>
Vice President	Mike Connoly	903-566-3603	<a href="mailto:mjconly@hotmail.com">mjconly@hotmail.com</a>
Treasurer	Walter Tate	903-839-6505	<a href="mailto:waltertate1@suddenlink.net">waltertate1@suddenlink.net</a>
Secretary	Ken Wurtzel	903-978-2121	<a href="mailto:kenwmo@gmail.com">kenwmo@gmail.com</a>
Program Coordinator	Kelvin Burton	903-780-7590	<a href="mailto:kelvin@burtonclan.us">kelvin@burtonclan.us</a>
Librarian	John Dove		<a href="mailto:always4jesus01@gmail.com">always4jesus01@gmail.com</a>
Newsletter Editor	Dennis Ford	936-676-9652	<a href="mailto:dennis@denniswoodart.com">dennis@denniswoodart.com</a>

Visit us at [www.easttexaswoodturners.org](http://www.easttexaswoodturners.org)

The Turning Times is published monthly as an information source for members of the East Texas Woodturners (ETW). ETW is a chapter of The American Association of Woodturners (AAW) and is committed to serving woodturners in the East Texas area surrounding Tyler, Texas. The ETW Chapter joins with the AAW in its dedication to providing education, information and organization to those interested in woodturning.

Zoom meeting

Oct 10, 2020



## Prez says:

***I cannot believe October has already arrived but it has, and with it wonderfully cooler autumn weather.*** I hope you have had time to enjoy and experience the refreshing change of another Fall season in East Texas. The deciduous trees are slowly beginning a shift of foliage colors from entirely green to yellow, red, and rusty shades in between. Even with the colorful natural changes around us perhaps a few woodturners have found time to be in their shops creating a beautiful piece on the lathe.

***Time is running out to submit a bid for the Cindy Drozda dyed burl turning she created in our August demo.*** Cindy donated her turning to the club to use as a fund raising project. The bidding closes on Friday evening, Oct 9, and the winner will be announced at the club meeting on Saturday. This outstanding piece is of museum quality by a professional woodturner that can be obtained at probably a fraction of the typical retail price. We need more bidding to happen before Friday. Bids should be emailed to [ETWoodturners@gmail.com](mailto:ETWoodturners@gmail.com). The club FaceBook page lists the current high bid, or contact Kelvin Burton if you cannot access FaceBook.

***Ed Heuslein, Danny King, Mike Connolly, and Ken Wurtzel have been busy making outstanding pens for the Combat Warriors event to be held in November.*** Thanks to these club members who generously give of their time and talents to provide memorable gifts to military vets who served the cause of American freedom. Every year our club provides the funds to purchase the pen kits and wood blanks for this project and the above individuals do the turning. With the payment of our club dues all of us participate in the project even if we did not do any of the work. Thanks to all of you and especially the turning group.

***Another way all of us can join a worthy project is to make one or more Beads of Courage (BOC) boxes.*** The project does require each of us to do some work but being a member of ETW you obviously like to spend time at the lathe and few projects are more worthwhile than a BOC box. By giving of our time, talents, energy, and a small bit of wood we can possibly make a HUGH difference in the life of a child and their parents or caregivers. We will probably never know how our BOC box effects the trauma a child is facing during their time of treatment but I think our gift would make a very positive difference. We will certainly make no difference if we do not make a BOC. So go make at least one between now and Thanksgiving.

## Table of Contents

Prez says	1
Members Classified	2
AnchorSeal available	2
Recent work pictures	3
Mentor Contact info	4
ETW Fact Sheet	4
Vendor info	5
Prez says continued	6
More pictures of recent work	6
Pat Carrol information	7

## CLASSIFIEDS

Classified Ad Policy: Classified ads run for 3-months unless the editor is notified they are no longer needed. At the end of the 3-month period, the ad will be dropped from the newsletter unless specifically renewed prior to the period expiration.

### Personalized Turning Classes

Paul Coppinger - Mineola - **903-638-6008**  
[paulcop68@thecoppingers.net](mailto:paulcop68@thecoppingers.net)

**LESSONS:** Woodturning classes my shop.  
Please call afternoons for more info **903-216-5564**. [cbrooks@suddenlink.net](mailto:cbrooks@suddenlink.net)  
**Charles Brooks (Whitehouse, Texas)**

**For Sale:** Powermatic 3520C wood lathe. (New price about \$4000.00). \$2000.00

Delta 10" Table Saw model Delta 10" Professional 36-650. (New Price about \$600.00) \$300.00

Rigid 13" Planer model 7P1300. (New price about \$460.00) \$200.00

Grizzly Band Saw Model G0555. (New price about \$1100.00) \$500.00

Contact Denny Burd at **903-850-2737**.

**For Sale:** I have a 1950's model Rockwell Delta table saw with a 6 inch Delta jointer. Table and jointer are on the same stand. This is a heavy duty unit made in the USA. 220 volt. I want **\$400.00** for it.  
**David Largent 903 852 7928**

## ANCHOR SEAL FOR SALE

The Club has Anchor Seal end grain sealer for sale at most Club meetings. It is available at \$15.00 per gallon. To obtain it, pay our treasurer, **Walter Tate**, and then see **Dennis Lorenz**. If you need some between meetings, contact Dennis at **903-565-0651** or [dlorenz67@gmail.com](mailto:dlorenz67@gmail.com)

### Upcoming events:

Online meeting Oct 10 Pat Caroll demonstrating

Online meeting Nov 14 Fred Clause demonstrating

Online meeting Dec 12 Art Liestman demonstrating

## Pictures of recent Work

Cindy Drozda's piece from her demo last month (to be Auctioned)



Top view

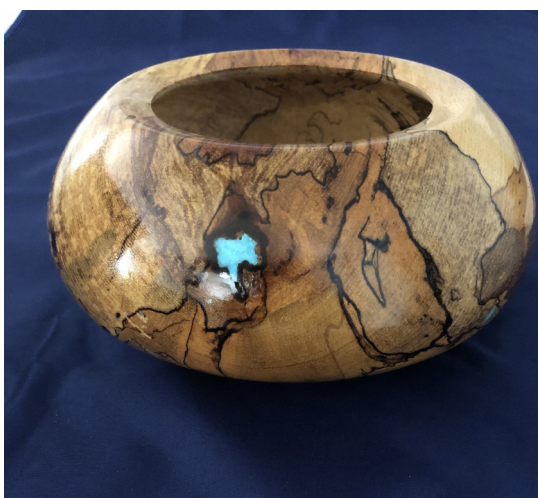


Bottom

John Wood (Sycamore with painted rim)



Michael Tate (Spalted Black Jack Oak  
7" dia X 4" tall)



Dennis Ford (Cyress spindles made for a local  
cabinet maker ~ 10" tall, 60 pcs)



Ken Wurtzel (Bradford Pear, 11" diameter  
with thin walls "finish is 50% done")



## East Texas Woodturners Fact-Sheet

We meet once a month (usually on the second Saturday) at 9:00 AM at Tyler Junior College West, room 104. At our monthly meetings, there is a show and tell table, an open library (hundreds of DVDs and books), a raffle for tools and/or gift certificates, and a demonstration. Oh, yeah – there is always lots of discussion and opinions – don't be afraid to ask!

Please visit our web page at <http://www.easttexaswoodturners.org/> - also, find us on Facebook – look for East Texas Woodturners. Take a look at the “Mentor Program” on our web page to see contact information on 15 mentors that will help you with turning situations. There is also information on ETW's vast library resources (see “Library”). And for dues information, click on “Membership Form”.

Also once a month (usually one week after our normal meeting), a lot of us gather at Paul Coppinger's shop in Mineola for MOST (Mineola Open Shop Turning). This is a come-and-go “hands-on” event, where you can turn on one of seven mini lathes, ask questions, or just watch. See “MOST Day” on the web page.

ETW participates in the “Beads of Courage” program – this is a national program where kids undergoing various medical procedures (usually cancer) are awarded beads for these procedures and need a container for their beads. See <http://www.beadsofcourage.org/> for additional information.

SWAT (Southwest Association of Turners) has an annual symposium in August – it is a 2-1/2 day event usually held in Waco at the convention center. The 2015 meeting had about 850 attendees, 50 vendors, a variety of demonstrations, and a gallery of beautiful turnings. See <http://www.swaturners.org/> for more details and cost information.

Member discounts are available from several vendors – please ask the vendor if a discount is available. Please remember that most discount lists are usually updated only once a year, after the dues are collected in the Spring.

Have questions? See the Newsletter for club officer contact information.

### Mentor List

J. J. Altier	903-714-3353	Ben Wheeler	<a href="mailto:jjaltierty@gmail.com">jjaltierty@gmail.com</a>
Charles Brooks	903-216-5564	Whitehouse	<a href="mailto:cbrooks@suddenlink.net">cbrooks@suddenlink.net</a>
Paul Coppinger	903-638-6008	Mineola	<a href="mailto:paulcop68@thecoppingers.net">paulcop68@thecoppingers.net</a>
Tom Crosby	903-567-4701	Canton	<a href="mailto:ctomsturnings@aol.com">ctomsturnings@aol.com</a>
Ed Heuslein	903-834-3838	Kilgore/Overton	<a href="mailto:heuslein@gmail.com">heuslein@gmail.com</a>
Walter Tate	903-839-6505	Tyler	<a href="mailto:waltertate1@suddenlink.net">waltertate1@suddenlink.net</a>
Ken Terrell	903-839-4735	Tyler	<a href="mailto:kpterrell@suddenlink.net">kpterrell@suddenlink.net</a>
John Wood	936-875-6100	Lufkin	<a href="mailto:twowood6@yahoo.com">twowood6@yahoo.com</a>

## East Texas Woodturner's Supporters

The following businesses have graciously provided support for the activities of the East Texas Woodturner's club. Please show your gratitude by giving them your business when possible.

### Craft Supplies USA

1287 E. 1120 S., Provo, UT 84606  
1-800-551-8876  
FAX: 801-377-7742

<http://www.woodturnerscatalog.com/>

### Hartville Tool

13163 Market Ave N Hartville, OH 44632  
800-345-2396

<http://www.hartvilletool.com/>

### Johnson Wood Products

34897 Crystal Rd., Strawberry Point, IA 52076  
563-933-6504 CST

<http://www.johnsonwoodproducts.com/>

### Klingspor's Woodworking Shop

3 Locations in North Carolina  
1-800-228-0000 EST

<http://www.woodworkingshop.com/>

### Packard Woodworks

P.O. Box 718, Tryon, NC 28782  
1-800-683-8876  
FAX: 828-859-5551

<http://www.packardwoodworks.com/index.html>

### Rockler

584 W Interstate 30  
Garland, TX 75043  
(469) 329-0971

<http://www.rockler.com/retail/stores/tx/garland-store>

### Thompson Lathe Tools

5479 Columbia Road North Olmsted, OH 44070  
440-241-6360 CST

<http://www.thompsonlathetools.com/>

### Woodcraft

Suite 145 601 W. Plano Parkway Plano, TX 75075  
(972) 422-2732

<http://www.woodcraft.com/stores/store.aspx?id=317>

### Woodline.com

111 Wheeler St., LaVergne, TN 37086  
615-793-0474 CST

<http://www.woodline.com/>

### Wood World

13650 TI Blvd. #101, Dallas, TX 75243  
972-669-9130 CST

<http://woodworldtx.com/>

### East Texas Hardwoods

Pittsburg Texas  
Joe Hallonquist  
Cell- 936-577-4306

### Carter & Son Toolworks

Woodturning Tools 206-878-7672

<http://www.carterandsontoolworks.com/>

(see Dennis Lorenz or Paul Coppinger for discount code)

Prez says (continued from page 1)

Mike Connolly plans to travel to the Children's Hospital in Dallas one more time this year – in late November or early December. Mike or I will be glad to pick up your box if you cannot take it to Mike's home in Chapel Hill. THANKS.

**A big "Thank You" also goes to Worth Holmes for the outstanding demo he gave us in September.** The natural edge goblet style piece he thoroughly demonstrated how to make was another one of the great remote demos we have been able to watch this year. I especially liked the unique shape of the piece and the off-center natural edge rim. Too, thanks to Ken Wurtzel for the great A/V work at the demo site in Worth's shop.

The demo Kelvin Burton has arranged for us in October should also be a great one. **Pat Carroll of the attractive river side town of Wexford in County Wexford located in southeastern portion of the Republic of Ireland will be our demonstrator this month.** Pat has been a professional turner since 2002 and his main focus is creating hollow forms. His demo topic will be a **Square Box with Pewter Inlay**. PLEASE plan to be with us on Saturday, October 10, for a turning experience live from Wexford, Ireland.

**In November, club member Fred Clause will be our demonstrator. His topic will be Christmas Ornaments** which is well timed to inspire us to make a few ornaments before the holiday season arrives. Fred is a very experienced and talented turner and I know his will be a great demo. Then to complete the year since we will not be able to have an in-person Christmas party, **Kelvin Burton has arranged a virtual December trip for us to beautiful Coquitlam, British Columbia where the remote demo will be provided by Art Liestman. His topic is the Lost Wood Process** – turning a 3 segment spindle, removing the center segment, then gluing the two outer pieces back together and turning a bit more to produce an almond shaped box – very beautiful. You can learn more about Art at his website – [www.artliestman.com](http://www.artliestman.com). Be with us on Saturday, December 12, to watch Art show us how it's done.

**Hope to see you many of you on Saturday for the Irish remote October demo – it should be a great one. Place a bid on the Drozda turning by Friday. Until then, take care, be safe.**

Ken Wurtzel Sycamore Pencil cup, twice turned Sycamore bowl and Spalted Water Oak bowl



Dennis Ford (Black Jack Oak hollow form and Red-Bud vase inspired by Worth Holmes demo last month)

Ken Wurtzel (Spalted Water Oak bowls)





## Pat Carrol, our demonstrator this month

Here is his Bio from his web site: <https://www.patcarrollwoodturning.com/>

My name is Pat Carroll and I am passionate about woodturning! Based in the south east of Ireland on the North Wexford border at the foot of Sliabh Bhui mountain, I am surrounded by some of the most beautiful and picturesque countryside. There are many walks in the area and breath taking views to adorn. I have been turning since 2002 and my main focus is creating hollow forms. This area of woodturning has always intrigued and interested me. Over the years I have explored many areas of this art/craft and love to experiment and enhance my pieces with colour, texture and additional mediums. I have demonstrated at local, national and international symposiums. My work is varied to suit all tastes, with commissions taken for gifts, weddings, corporate prizes or event trophies.

This is a closer view of a couple of the “Square Box with Pewter inserts”

